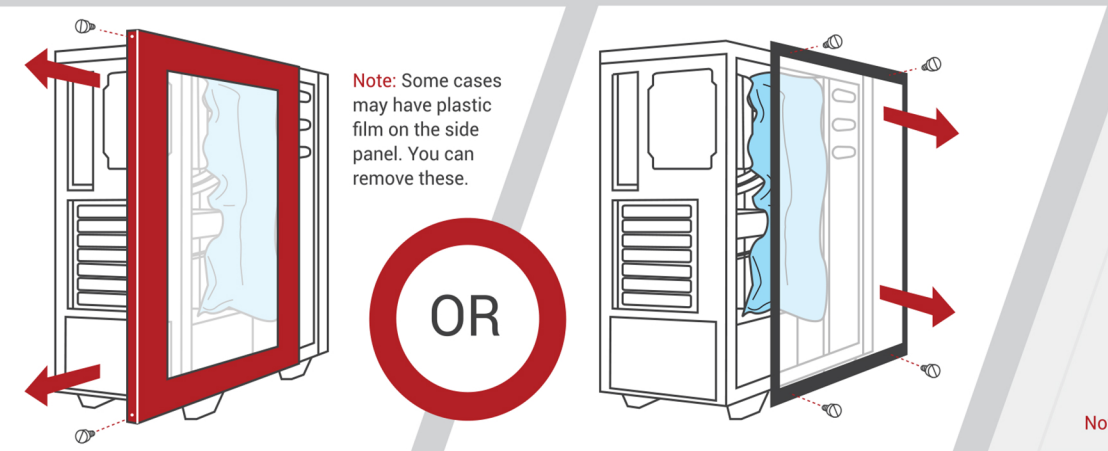


QUICK START GUIDE

GOODBYE WORRIES **HELLO PERFECTION**

First, Please remove packing material from inside the system

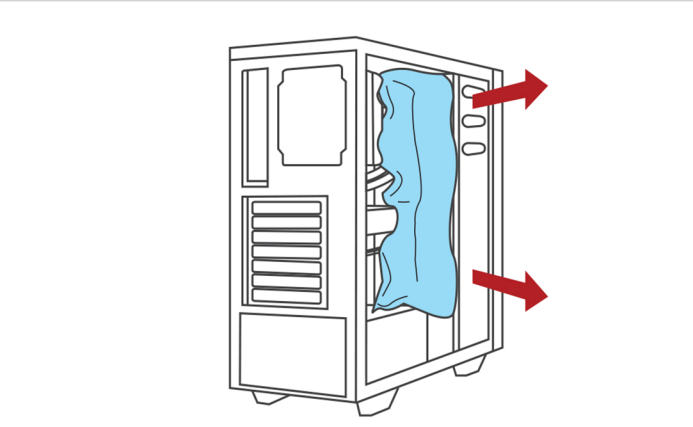


Note: Some cases may have plastic film on the side panel. You can remove these.

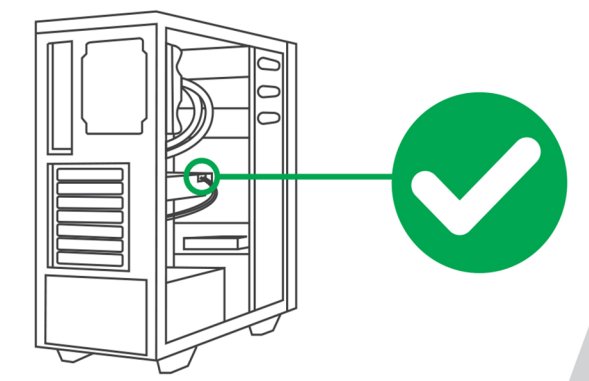
OR

Unscrew the screws from the left side panel and remove panel

Unscrew the screws from the front of the left side glass panel and remove panel



Carefully and gently remove the protective packing foam from inside the system



Note: Depending on system build, there may be more cables.

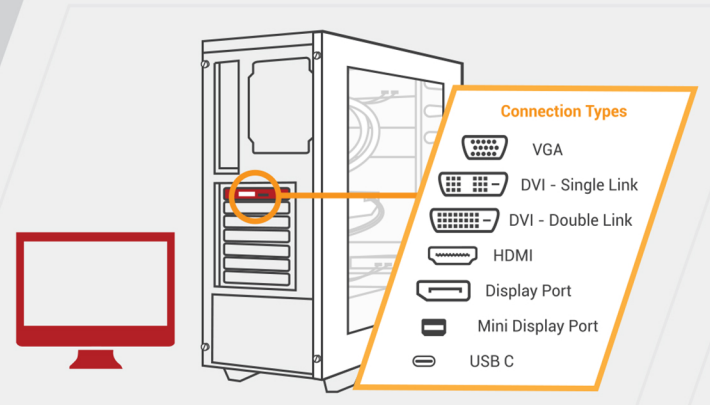
Check that the cables were not disconnected

CONNECT

PLUG & PLAY

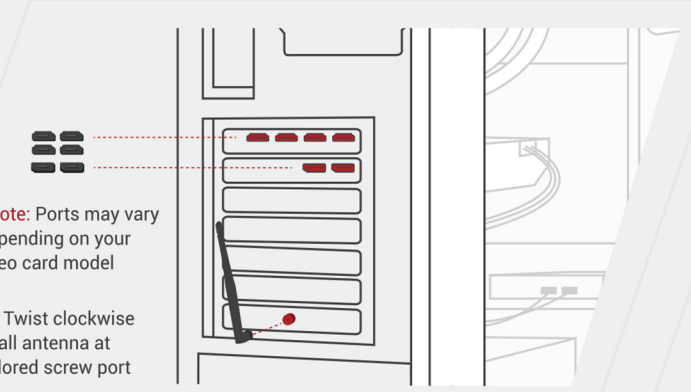
DISPLAY & PERIPHERALS

Connect your display, peripherals, and more, for the ultimate gaming experience.



Note: Different video cards have different connectivities

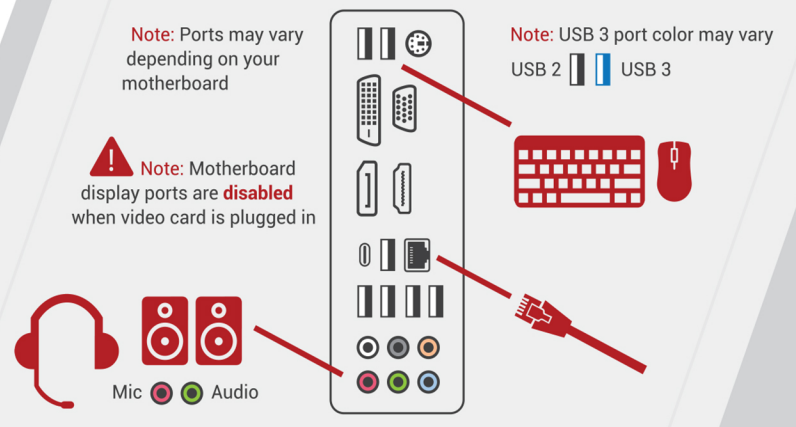
Connect your display only to the video card installed as shown



Note: Ports may vary depending on your video card model

Note: Twist clockwise to install antenna at gold colored screw port

Be sure to remove protective tabs from video card ports. Check accessory bags for wifi antenna (only applicable if system order was configured with one) For illustrative purposes



Note: Ports may vary depending on your motherboard

Note: Motherboard display ports are disabled when video card is plugged in

Note: USB 3 port color may vary
USB 2 | USB 3

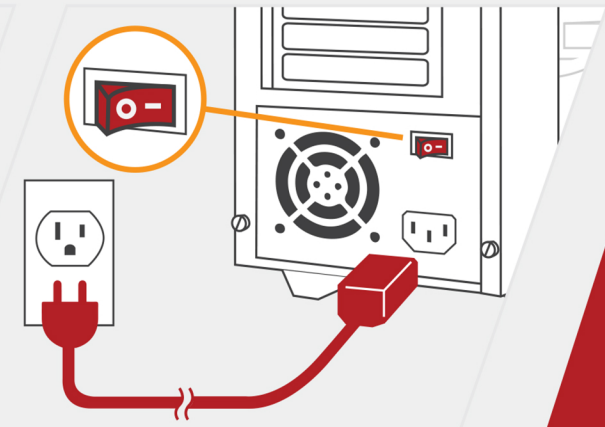
Connect your peripherals shown on the diagram above

POWER

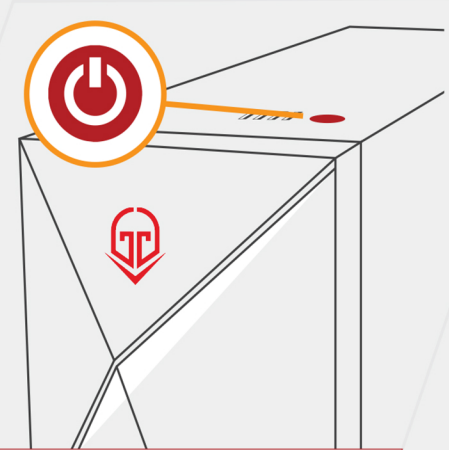
LIGHT IT UP!

POWERING ON

Connect the power cable to the back of your system. Make sure the power supply is switched on.



Plug-in the power cord and switch on the power supply before hitting the power button

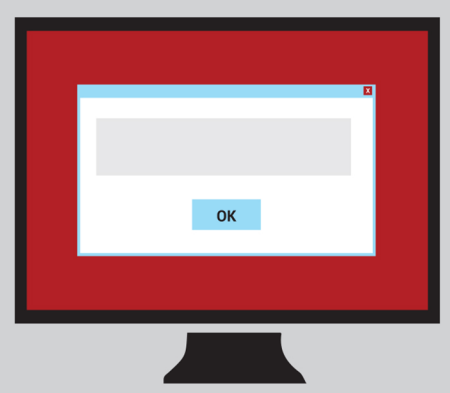


Power on the system by pressing the power button (location of button may vary)

PERSONALIZE

ALMOST THERE!

CUSTOMIZE YOUR EXPERIENCE



Follow the on screen prompts to set up your Windows experience. Systems no longer require a product key to activate and will activate automatically when connected to the internet.

Need more help?
Flip this page over for some FAQs!

THANK YOU FOR PURCHASING GIGATECH GAMING



WARRANTY & REPAIR



CUSTOMER SERVICE

CUSTOMER SUPPORT INFO:
EMAIL: admin@gigatechgaming.com
Chat with us at: www.gigatechgaming.com



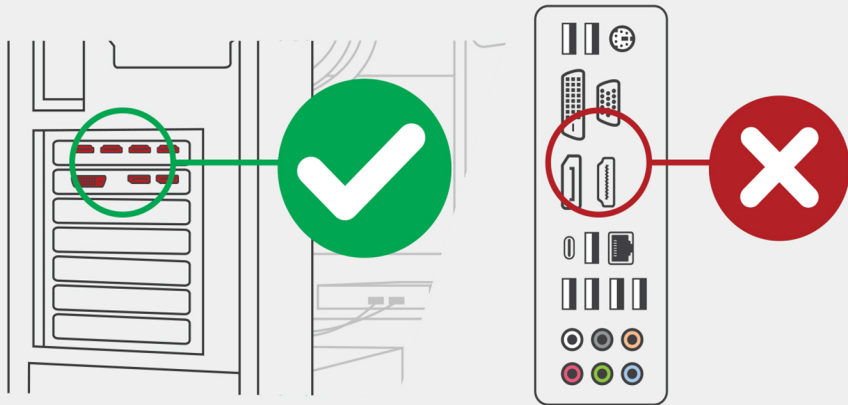
GIGATECH GAMING

www.gigatechgaming.com
Brick | New Jersey | US 08723

FREQUENTLY ASKED QUESTIONS

Why is my screen blank?

Please double check if the display is connected directly into the Video Card. The motherboard's integrated display will be disabled if a GPU is present.



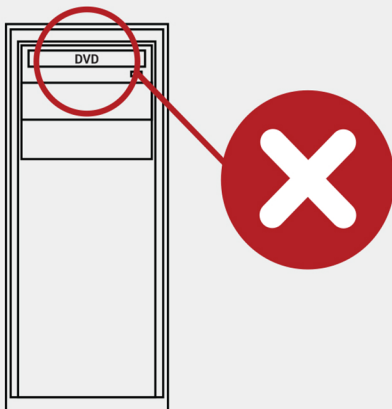
Where is my Microsoft Windows 10 Sticker?

The Windows Product Key for your system is stored in the motherboard's BIOS. The key can be transferred to a new system by using the same Microsoft Account.

For Retail customers the game codes will be distributed by the seller where the purchase is made from.

Where's my DVD drive?

Most GIGATECH GAMING PCs no longer include a DVD drive.



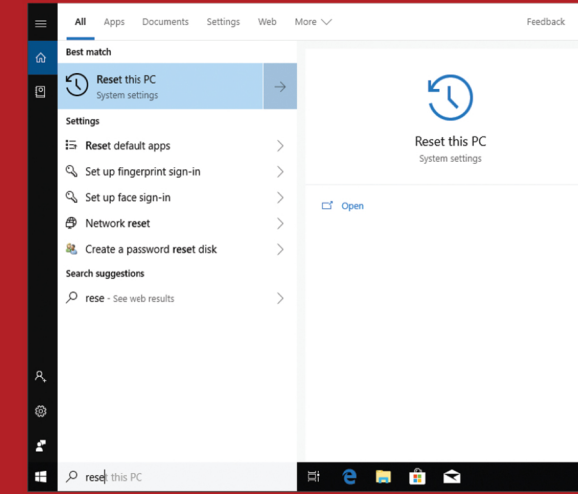
Contact our tech support at admin@gigatechgaming.com or online at www.gigatechgaming.com/FAQ for further assistance.

WINDOWS REINSTALLATION PROCEDURE

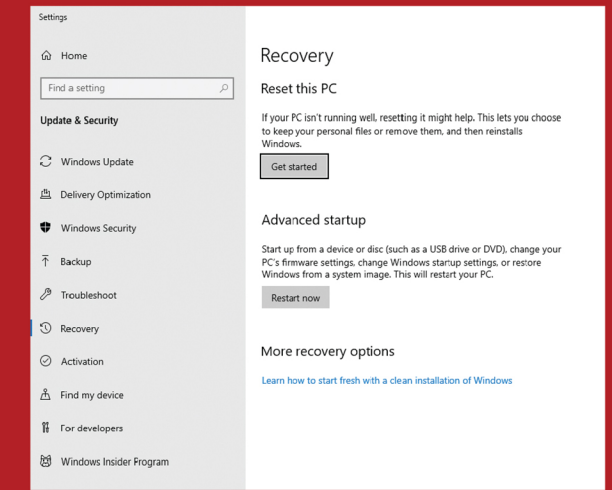
Please follow the instructions below on how to reinstall Windows using recovery partitions.

NOTE: The Windows Product Key for your system is stored in the motherboard's BIOS.

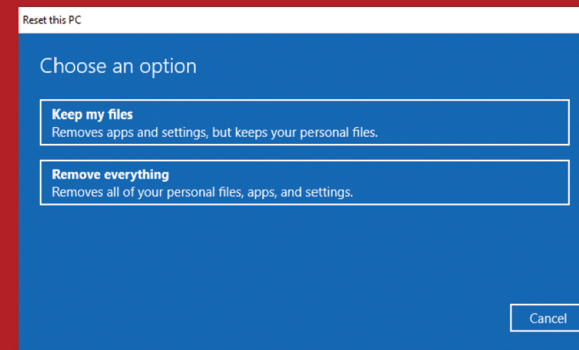
SCENARIO: SYSTEM RECOVERY



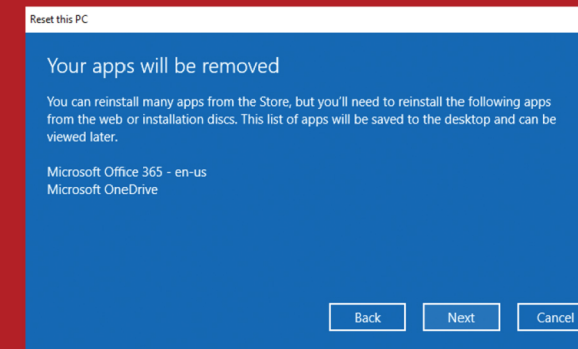
1. Type "Reset this PC" in the search bar and click on "reset this pc" option.



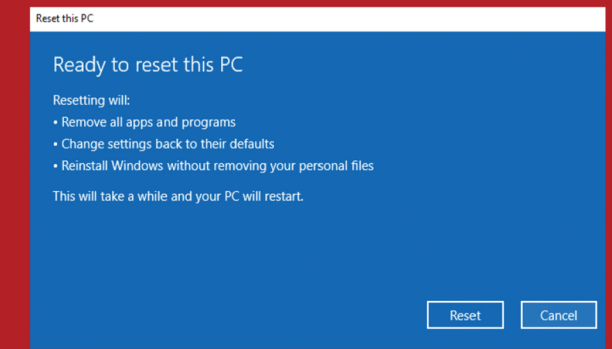
2. Click on "Get Started" button under reset this PC.



3. Choose "Keep my files" or "Remove everything" to reset this pc. (Warning: "Remove everything" will remove all personal files and information.)

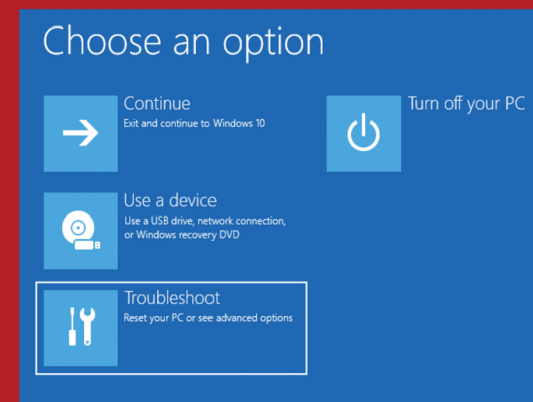


4. Click on "Next".

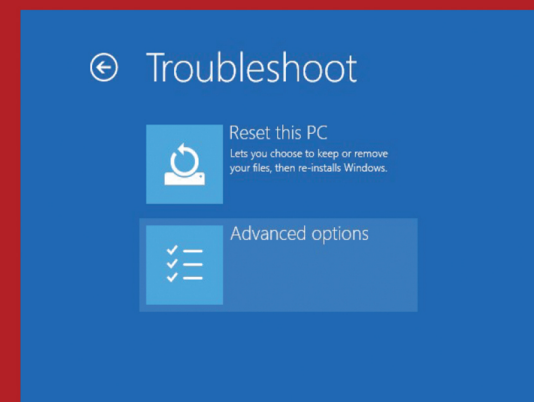


5. Click "Reset" button to confirm and start system reset process

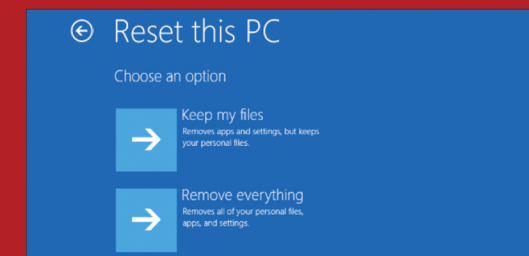
SCENARIO: CORRUPTED WINDOWS



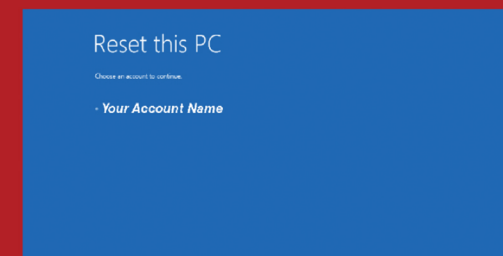
1. When Windows gets corrupted, system will enter the above screen display. Click on "Troubleshoot" button.



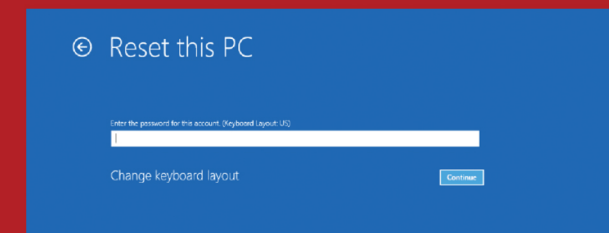
2. Click on "Reset this PC"



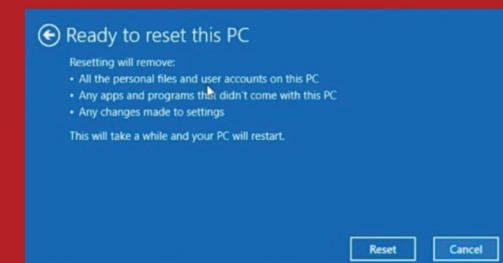
3. Choose "Keep my files" or "Remove everything" to reset this pc. (Warning: "Remove everything" will remove all personal files and information.)



4. Click to choose an account to continue reset



5. Enter account password and click on "Continue".



6. Click on "Reset" to start system recovery.